

# The Georgian Garden – planting for people and wildlife

The key and images below will help you recognize the plants in each bed and identify their special characteristics.

## FLOWERBED 1

- Black elder *Sambucus* 'Black Lace' 🦋🦋
- Yew *Taxus baccata* 🦋🦋
- Box hedging *Buxus sempervirens*
- Shrub rose *Rosa moyesii* 🦋🦋
- Rose *Rosa* 'Ferdinand Pichard' 🦋🦋
- ◆ Montbretia *Crocsmia* 'Lucifer'
- Meadow sage *Salvia* 'Blauhügel' 🦋🦋
- Coral flower *Heuchera* 'Chocolate Ruffles'
- Japanese sedge *Carex* 'Evergold'
- Masterwort *Astrantia* 'Roma' 🦋

## Mixed planting

- Japanese anemones  
*Anemone* 'Honorine Jobert'  
*Anemone* 'Queen Charlotte'
- Scabious *Knautia macedonica* 🦋
- Sanguisorba *Officinalis* 'Morning Select'
- Bistorts  
*Persicaria amplexicaulis* 'Fire Dance'  
*Persicaria amplexicaulis* 'Alba'
- Catmints  
*Nepeta grandiflora* 'Wild Cat' 🦋🦋  
*Nepeta* 'Six Hills Giant' 🦋🦋

## FLOWERBED 2

- Holly *Ilex aquifolium* 'Alaska' 🦋🦋
- Mock orange *Philadelphus* 'Belle Etoile' 🦋
- Shrub roses *Rosa* 🦋🦋
- Shrub rose *Rosa* 'Gertrude Jekyll' 🦋
- Peony *Paeonia* 'Festiva Maxima' 🦋
- Michaelmas daisy *Aster* 🦋🦋
- Aster *Aster* 'Mönch' 🦋🦋
- Russian sage *Perovskia* 'Blue Spire' 🦋🦋
- Sneezeweeds *Helenium* 🦋🦋
- Coral flower *Heuchera* 'Chocolate Ruffles'
- Anemone *Anemone* 'Honorine Jobert' 🦋
- Ice plant *Sedum spectabile* 🦋🦋

## Mixed planting

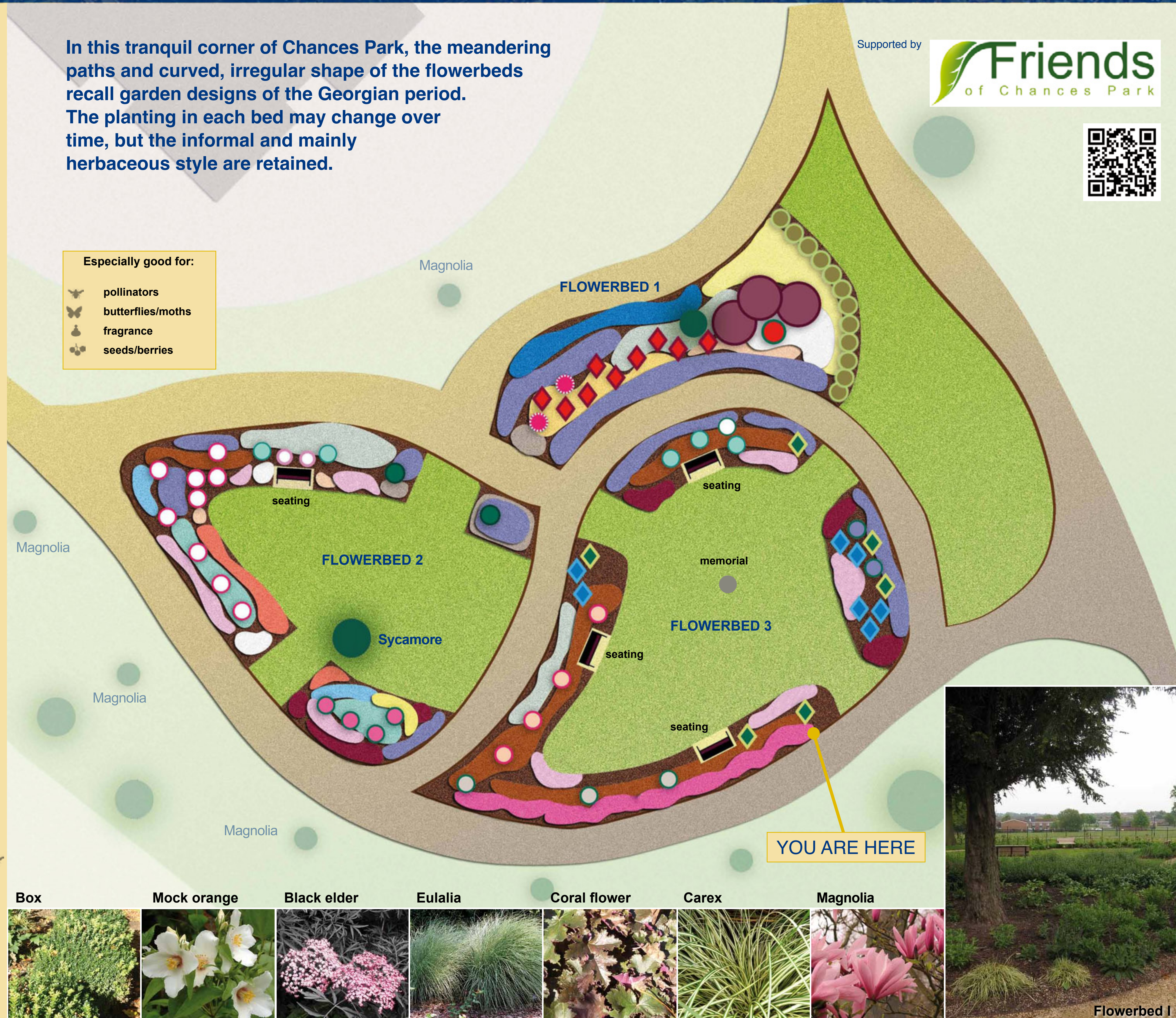
- Geraniums  
*Geranium* 'Ann Folkard'  
*Geranium* 'Rozanne'
- Bistorts  
*Persicaria amplexicaulis* 'Fire Dance'  
*Persicaria amplexicaulis* 'Alba'
- Catmints  
*Nepeta grandiflora* 'Wild Cat' 🦋  
*Nepeta* 'Six Hills Giant' 🦋🦋

In this tranquil corner of Chances Park, the meandering paths and curved, irregular shape of the flowerbeds recall garden designs of the Georgian period. The planting in each bed may change over time, but the informal and mainly herbaceous style are retained.

Especially good for:

- 🦋 pollinators
- 🦋 butterflies/moths
- 🦋 fragrance
- 🦋 seeds/berries

Supported by



Evergreen shrubs, sedges and grasses have provided colour, shape and form over many months. As lengthening days and warming soil coax dormant plants back to growth, the bare stems of winter give way to new leaves, shoots and blossom. A developing mosaic of herbaceous perennials hints at the seasons to come.

The feathery, purple leaves and pale pink flowers of *Sambucus* 'Black Lace' contrast with the fresh green of clipped box balls in flowerbed 1. Small white flowers appear on purple stems above the pinky-brown foliage of *Heuchera* 'Chocolate Ruffles'.

May's 'rough winds' shake the emerging buds of the magnolias and give rustling movement to the fronds of *Miscanthus* 'Morning Light'. In flowerbed 3, you can also enjoy the fragrance of *Philadelphus* 'Belle Etoile' when it flowers in May/ June.

Small Tortoiseshell



## FLOWERBED 3

- Mexican orange *Choisya ternata* 🦋🦋
- Butterfly bush *Buddleja* 'Pink Delight' 🦋🦋
- Mock orange *Philadelphus* 'Belle Etoile' 🦋
- Hybrid musk rose *Rosa* 'Buff Beauty' 🦋🦋
- Species rose *Rosa Californica Plena* 🦋🦋
- ◆ Eulalia *Miscanthus* 'Morning Light'
- ◆ Bearded Iris *Iris* 'Jane Philips' 🦋🦋
- Cone Flower *Echinacea purpurea* 🦋🦋
- Coral flower *Heuchera* 'Chocolate Ruffles'
- Ice plant *Sedum spectabile* 🦋🦋

## Mixed planting

- Geraniums  
*Geranium* 'Ann Folkard'  
*Geranium* 'Rozanne'
- Bistorts  
*Persicaria amplexicaulis* 'Fire Dance'  
*Persicaria amplexicaulis* 'Alba'
- Catmints  
*Nepeta grandiflora* 'Wild Cat' 🦋  
*Nepeta* 'Six Hills Giant' 🦋🦋
- Sneezeweeds  
*Helenium* 'Moerheim Beauty'  
*Helenium* 'The Bishop'  
*Helenium* 'Rubinswerg'

A copy of this diagram, which shows the planting designed by David Redmore in 2007, can be obtained from Morton Manor Community Centre. A plan of trees planted in the park is also available. Both plans can be downloaded from [www.friendsofchancespark.co.uk](http://www.friendsofchancespark.co.uk)