

The Georgian Garden – planting for people and wildlife

The key and images below will help you recognize the plants in each bed and identify their special characteristics. The planting may change over time.

FLOWERBED 1

-  Black elder *Sambucus* 'Black Lace' 🐝🐝
-  Yew *Taxus baccata* 🐝🐝
-  Box hedging *Buxus sempervirens*
-  Shrub rose *Rosa moyesii* 🐝🐝
-  Rose *Rosa* 'Ferdinand Pichard' 🐝🐝
-  Montbretia *Crocsmia* 'Lucifer'
-  Meadow sage *Salvia* 'Blauhügel' 🐝🐝
-  Coral flower *Heuchera* 'Chocolate Ruffles'
-  Japanese sedge *Carex* 'Evergold'
-  Masterwort *Astrantia* 'Roma' 🐝

Mixed planting

-  Japanese anemones
Anemone 'Honorine Jobert'
Anemone 'Queen Charlotte'
-  Scabious *Knautia macedonica* 🐝
-  Sanguisorba *Officinalis* 'Morning Select'
-  Bistorts
Persicaria amplexicaulis 'Fire Dance'
Persicaria amplexicaulis 'Alba'
-  Catmints
Nepeta grandiflora 'Wild Cat' 🐝🐝
Nepeta 'Six Hills Giant' 🐝🐝

FLOWERBED 2





-  Holly *Ilex aquifolium* 'Alaska' 🐝🐝
-  Mock orange *Philadelphus* 'Belle Etoile' 🐝
-  Shrub roses *Rosa* 🐝🐝
-  Shrub rose *Rosa* 'Gertrude Jekyll' 🐝
-  Peony *Paeonia* 'Festiva Maxima' 🐝
-  Michaelmas daisy *Aster* 🐝🐝
-  Aster *Aster* 'Mönch' 🐝🐝
-  Russian sage *Perovskia* 'Blue Spire' 🐝🐝
-  Sneezeweeds *Helenium* 🐝🐝
-  Coral flower *Heuchera* 'Chocolate Ruffles'
-  Anemone *Anemone* 'Honorine Jobert' 🐝
-  Ice plant *Sedum spectabile* 🐝🐝

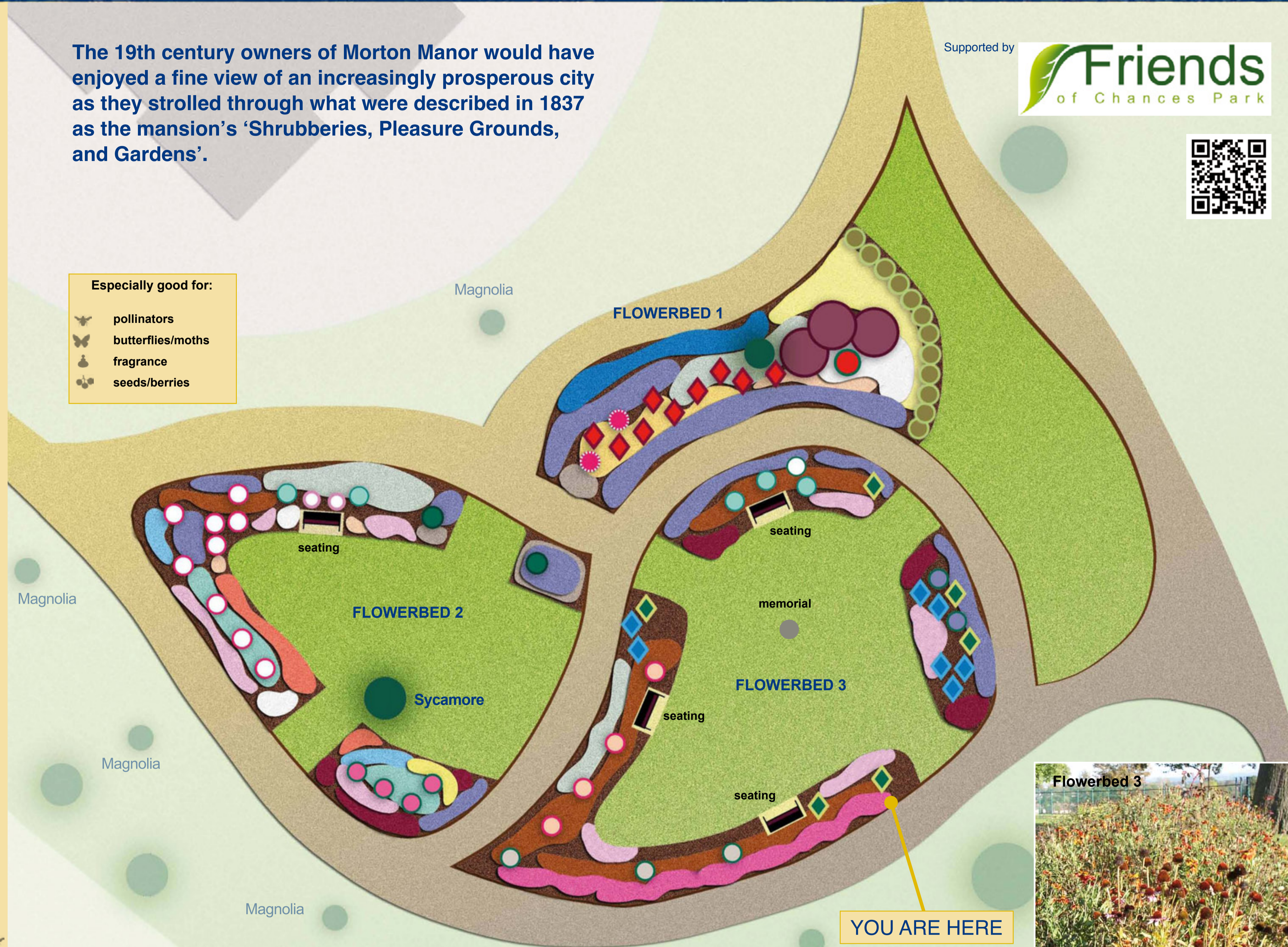
Mixed planting

-  Geraniums
Geranium 'Ann Folkard'
Geranium 'Rozanne'
-  Bistorts
Persicaria amplexicaulis 'Fire Dance'
Persicaria amplexicaulis 'Alba'
-  Catmints
Nepeta grandiflora 'Wild Cat' 🐝
Nepeta 'Six Hills Giant' 🐝🐝

The 19th century owners of Morton Manor would have enjoyed a fine view of an increasingly prosperous city as they strolled through what were described in 1837 as the mansion's 'Shrubberies, Pleasure Grounds, and Gardens'.

Especially good for:

-  pollinators
-  butterflies/moths
-  fragrance
-  seeds/berries



Supported by 



Summer turns into autumn and the garden changes as a new cast of performers takes the stage.

Peonies and scabious die back, but catmint and blue sage go on flowering until wind, rain and frost take their toll. When the aromatic leaves and blue flowers of Perovskia 'Blue Spires' fall, silvery white stems remain, ghosts of warmer days.

Splashes of autumn colour appear throughout the Georgian Garden: sparks of red from the slender spikes of Persicaria 'Fire Dance', and – until the birds find them – drops of scarlet from the hips on shrub and species roses. Sedum and heuchera add earthy tones of dark red, green and brown to the palette, but the glowing oranges, browns and yellows of the heleniums in flowerbed 3 are surely the stars of the show.



Red Admiral

FLOWERBED 3

-  Mexican orange *Choisya ternata* 🐝🐝
-  Butterfly bush *Buddleja* 'Pink Delight' 🐝🐝
-  Mock orange *Philadelphus* 'Belle Etoile' 🐝
-  Hybrid musk rose *Rosa* 'Buff Beauty' 🐝
-  Species rose *Rosa Californica Plena* 🐝🐝
-  Eulalia *Miscanthus* 'Morning Light'
-  Bearded Iris *Iris* 'Jane Philips' 🐝🐝
-  Cone Flower *Echinacea purpurea* 🐝🐝
-  Coral flower *Heuchera* 'Chocolate Ruffles'
-  Ice plant *Sedum spectabile* 🐝🐝

Mixed planting

-  Geraniums
Geranium 'Ann Folkard'
Geranium 'Rozanne'
-  Bistorts
Persicaria amplexicaulis 'Fire Dance'
Persicaria amplexicaulis 'Alba'
-  Catmints
Nepeta grandiflora 'Wild Cat' 🐝
Nepeta 'Six Hills Giant' 🐝🐝
-  Sneezeweeds
Helenium 'Moerheim Beauty'
Helenium 'The Bishop'
Helenium 'Rubinswerg'



A copy of this diagram, which shows the planting designed by David Redmore in 2007, can be obtained from Morton Manor Community Centre. A plan of trees planted in the park is also available. Both plans can be downloaded from www.friendsofchancespark.co.uk